



# ASPIRE RESIDENTIAL

Service | Expertise | Accountability



## **Heene Road, Worthing, BN11 4PH – £299,950**

Aspire Residential are delighted to offer to the market this spacious two-bedroom first floor apartment. Internally the property compromises of two bedrooms, a spacious living room/dining room, kitchen and shower room. Additional benefits include being less than a mile walk of the seafront, town centre and a train station. The property also offers a west facing garden. Please call us today to arrange a viewing on 01903 259961.

### **Key Features:**

- **Two Bedrooms**
- **No Forward Chain**
- **West Facing Garden**
- **Character Features**
- **Close To Seafront**
- **Short Walk To Local Amenities & Mainline Train Station**

[www.aspireresidential.co.uk](http://www.aspireresidential.co.uk)

28 Goring Road , Worthing, BN12 4AD  
01903 259961    [info@aspireresidential.co.uk](mailto:info@aspireresidential.co.uk)

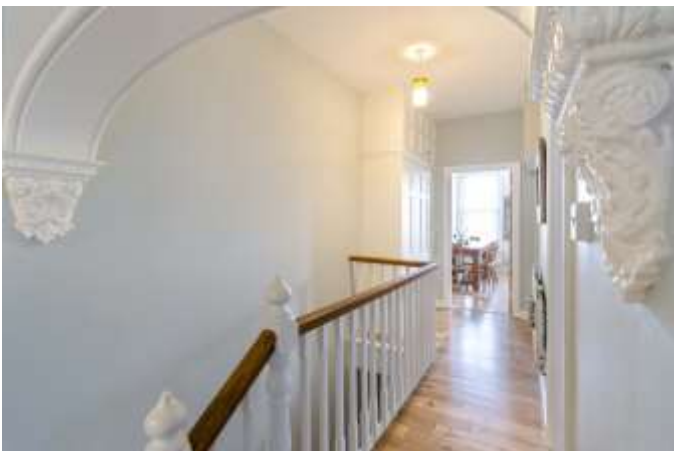


### Stairs Up To

Split level landing. Access to the loft. Two storage cupboards. Radiator. Meters cupboard. Hard wood flooring.

### Lounge/Diner *15' 6" Recess' x 17' 1" (4.72m x 5.20m)*

Double glazed sash windows into bay with radiator below. Coved ceiling. Picture rails. Multi fuel burner. Low level storage cupboards. Space to dine. TV point & phone point. Hard wood floor.



### Master bedroom *13' 1" Recess x 10' 9" (3.98m x 3.27m)*

Double glazed sash windows to rear with radiator below. Picture rails. Hard wood floor.

### Shower Room

Frosted double glazed window to side. Double length walk in shower with feature downlights and drench shower. Button flush W/C. Pedestal wash hand basin. Chrome heated towel rail. Tiled floor.



### Bedroom 2 *9' 1" x 7' 8" (2.77m x 2.34m)*

Double glazed sash to side with radiator below. Hard wood floor.



**Kitchen** 10' 11" x 10' 7" (3.32m x 3.22m)

Double glazed windows to side. Double glazed door to rear providing double aspect light. Matching range of wall and base units throughout. Space for gas cooker. One and a half bowl sink inset to work top with power hose mixed tap and drainer. Space for washing machine , dishwasher & fridge freezer. Tiled floor.

**Staircase Down To West Facing Garden**

**West Facing Garden**

Wall enclosed. Paved throughout with decorative flower beds. European clay pizza oven and wood storage.

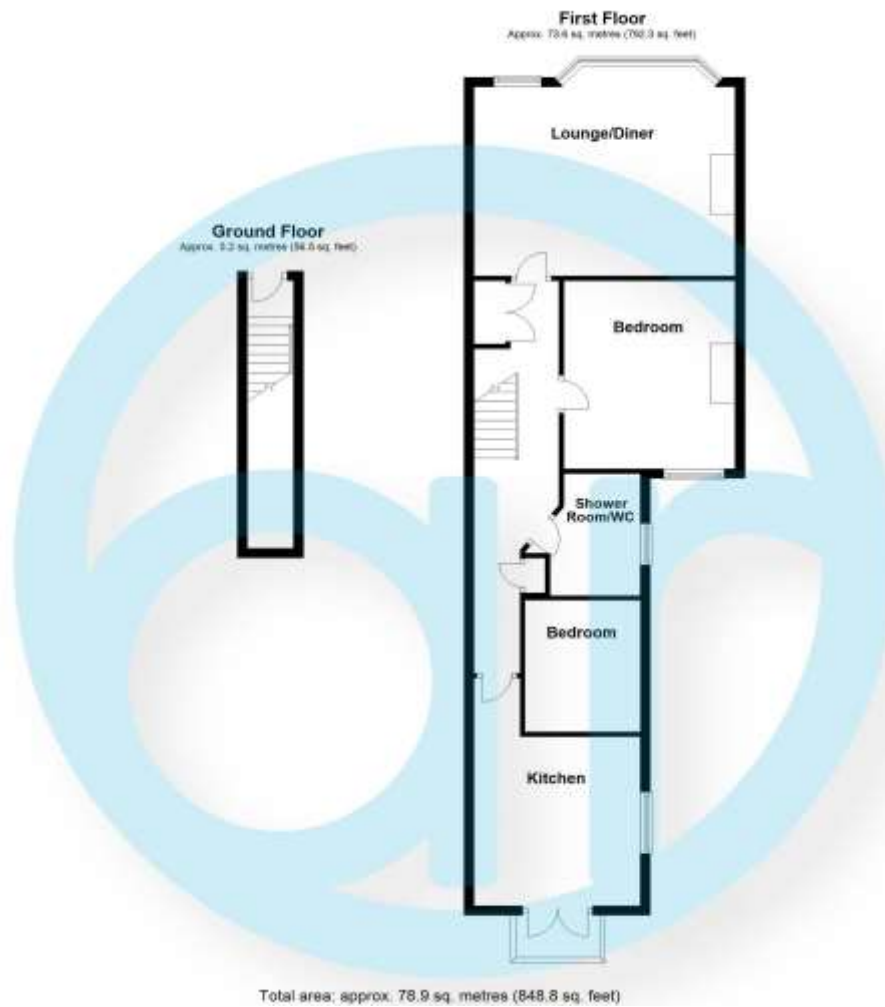
**Tenure**

Freehold

**Maintenance**

50/50 as and when required.





[www.aspireresidential.co.uk](http://www.aspireresidential.co.uk)

28 Goring Road , Worthing, BN12 4AD  
01903 259961    [info@aspireresidential.co.uk](mailto:info@aspireresidential.co.uk)